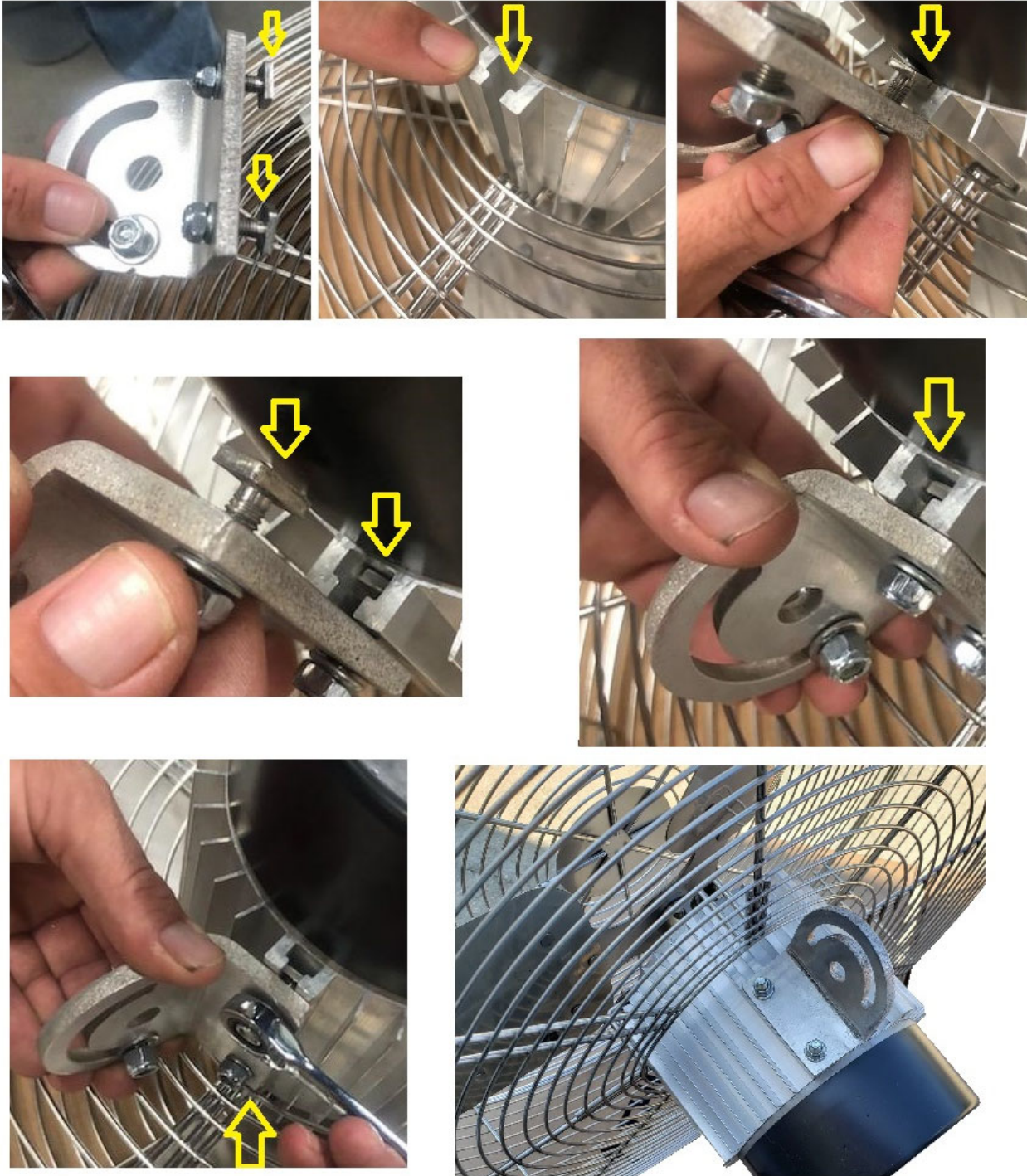


Motor Mount Bracket To attached "L" Bracket

Insert flat screw end into mounting track on back of motor. Tighten with wrench



24BVSS-X 24" Outdoor Stainless Steel Fans

Instructions for Mounting "L" Type Bracket

Multi position "L" Style Fan Bracket

Requires 2-3 3/8" bolts to mount to wall or wall/ceiling not included.



Arched hole for adjusting tile/degree fan up/down For angling left/right.
Tighten nuts once desired airflow angle is determined.



3/8" bolts for wall / ceiling mount NOT included

